

March 2019

core

Presentation AMRAE

Gregory Zouane – Director
Gregory.zouane@controlrisks.com

Simon Mitchell – Associate Consultant
Simon.Mitchell@controlrisks.com

► What is CORE?

CORE is a risk monitoring toolkit that allows you to evaluate opportunities and threats around the world.



Daily global coverage



Threat ratings



Powerful mapping



In-depth analysis



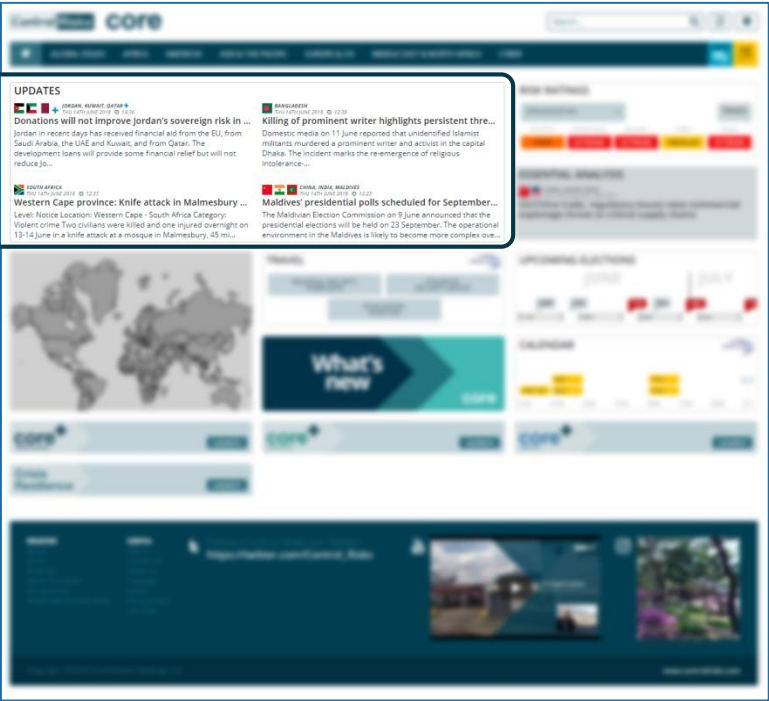
Customisable tools

CORE can be seamlessly integrated with CORE+ modules. Combined, these services give you unparalleled insight into the many and diverse risks your organisation faces around the world, helping you to mitigate these risks effectively.

► Daily global coverage

Our experts publish between 20 to 30 daily updates

Stay informed - Our analysis is compiled by a team of over 70 experts. These country analysts and editors deliver detailed content, drawing on their backgrounds and extensive, on-the-ground experience.



Latest coverage and updates featured on the homepage...



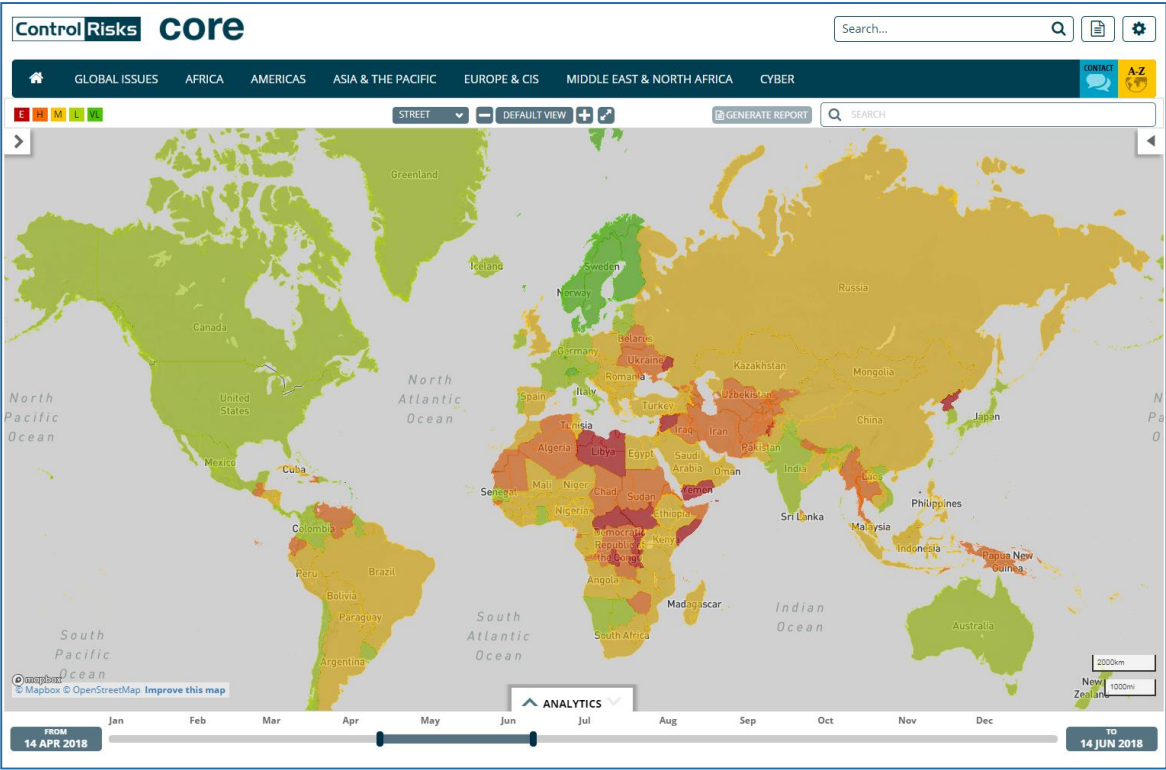
...linked to our complete act on analysis...

...with related content conveniently delivered to help you make fully informed commercial decisions.

Threat ratings

Evaluate and compare countries across a range of security, operational and political ratings that can be filtered, visualised, tracked over time and downloaded.

Navigate via country list, interactive map or timeline



The screenshot shows the 'ControlRisks core' web application with the 'RISK RATINGS' section selected. It displays a table of risk ratings for various countries across different categories: Evacuation Phase, Political, Operational, Security, Cyber, and Travel. The ratings are color-coded: Very Low (green), Low (yellow), Medium (orange), High (red), and Extreme (dark red).

Country/Territory	EvacUATION PHASE	POLITICAL	OPERATIONAL	SECURITY	CYBER	TRAVEL
Uganda		MEDIUM	MEDIUM	MEDIUM	MEDIUM	MEDIUM
Ukraine	Warning	HIGH	MEDIUM	MEDIUM	EXTREME	MEDIUM
United Arab Emirates	Preparatory	MEDIUM	LOW	LOW	HIGH	LOW
United Kingdom		MEDIUM	LOW	LOW	HIGH	LOW
United States		LOW	LOW	LOW	HIGH	LOW
Uruguay		LOW	LOW	LOW	LOW	LOW
US Virgin Islands	Preparatory	VERY LOW	HIGH	LOW	LOW	LOW
Uzbekistan	Preparatory	HIGH	HIGH	LOW	LOW	LOW
Vanuatu	Preparatory	MEDIUM	MEDIUM	LOW	LOW	LOW
Vatican City		VERY LOW	VERY LOW	VERY LOW	LOW	LOW
Venezuela	Non-essential staff	HIGH	HIGH	HIGH	LOW	HIGH

► Threat ratings



Security

- Crime
- Terrorism
- War
- Civil unrest
- Kidnap



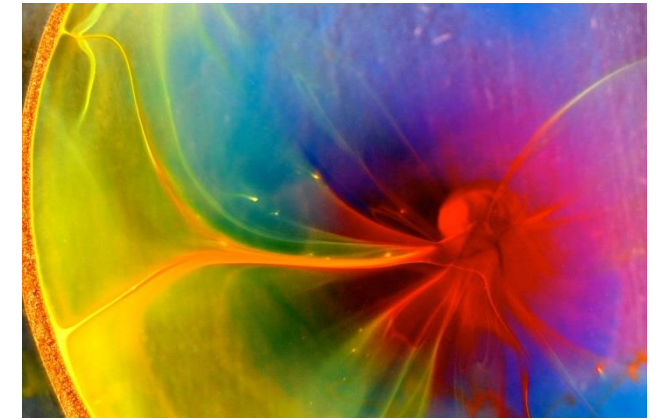
Operational

- Infrastructure
- Institutional
- Labour



Political

- Political stability

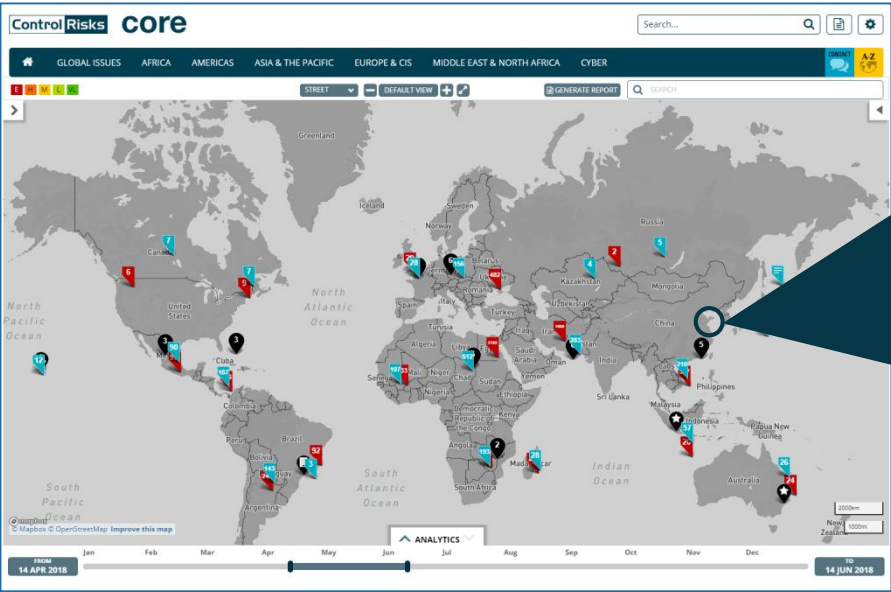


Further sub-ratings available as part of specific CORE+ modules:

- Regulatory (CORE+ Political)
- Contract (CORE+ Political)
- Integrity (CORE+ Political)
- Sovereign (CORE+ Political)
- Cyber (CORE+ Cyber)
- Travel (with International SOS Membership)

► Powerful mapping

Understand the local threat environment of your operations by visualising incident data alongside threat rating overlays. Conduct granular analysis to understand trends in targeting and methods.



An extensive database of political violence incidents visualised on a mapping interface...



...with specific location information collected by experts analysts for each incident, filter to city, street or building of relevance to your operations...

BY CATEGORIES



BY SECTOR



ATTACK TYPES



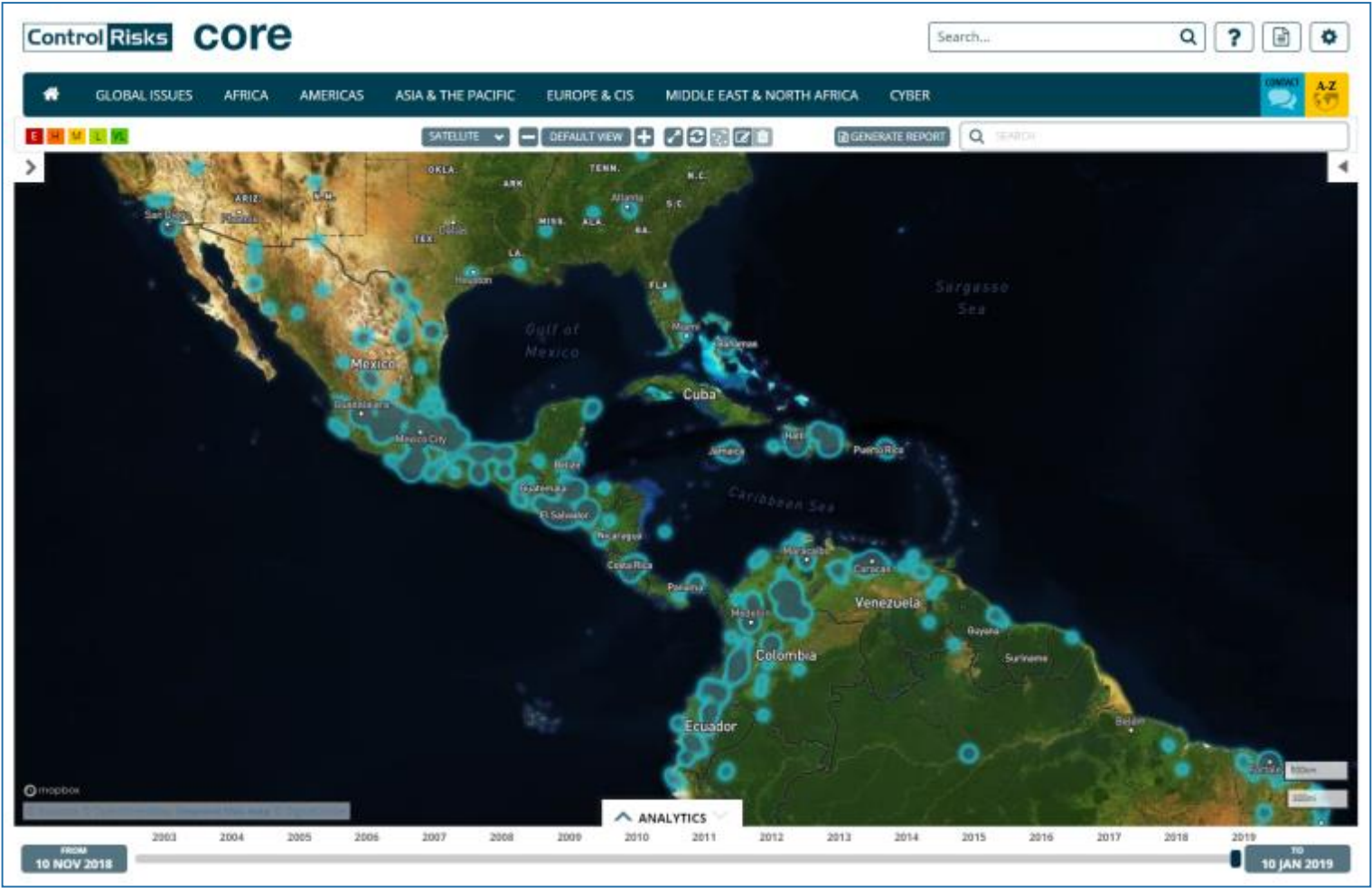
..then access the powerful analytics and charting functionality

► Powerful mapping

Switch between map markers or heat map, satellite or street view.

MARKERS

HEATMAP



Find relevant information via key word searches or comprehensive drop down menu filters

SEARCH

COUNTRIES

REGIONS

CATEGORIES

SECTORS

ASSET TYPES

ATTACK TYPES

DAMAGE VALUE

SEVERITY SCORE

PERPETRATORS

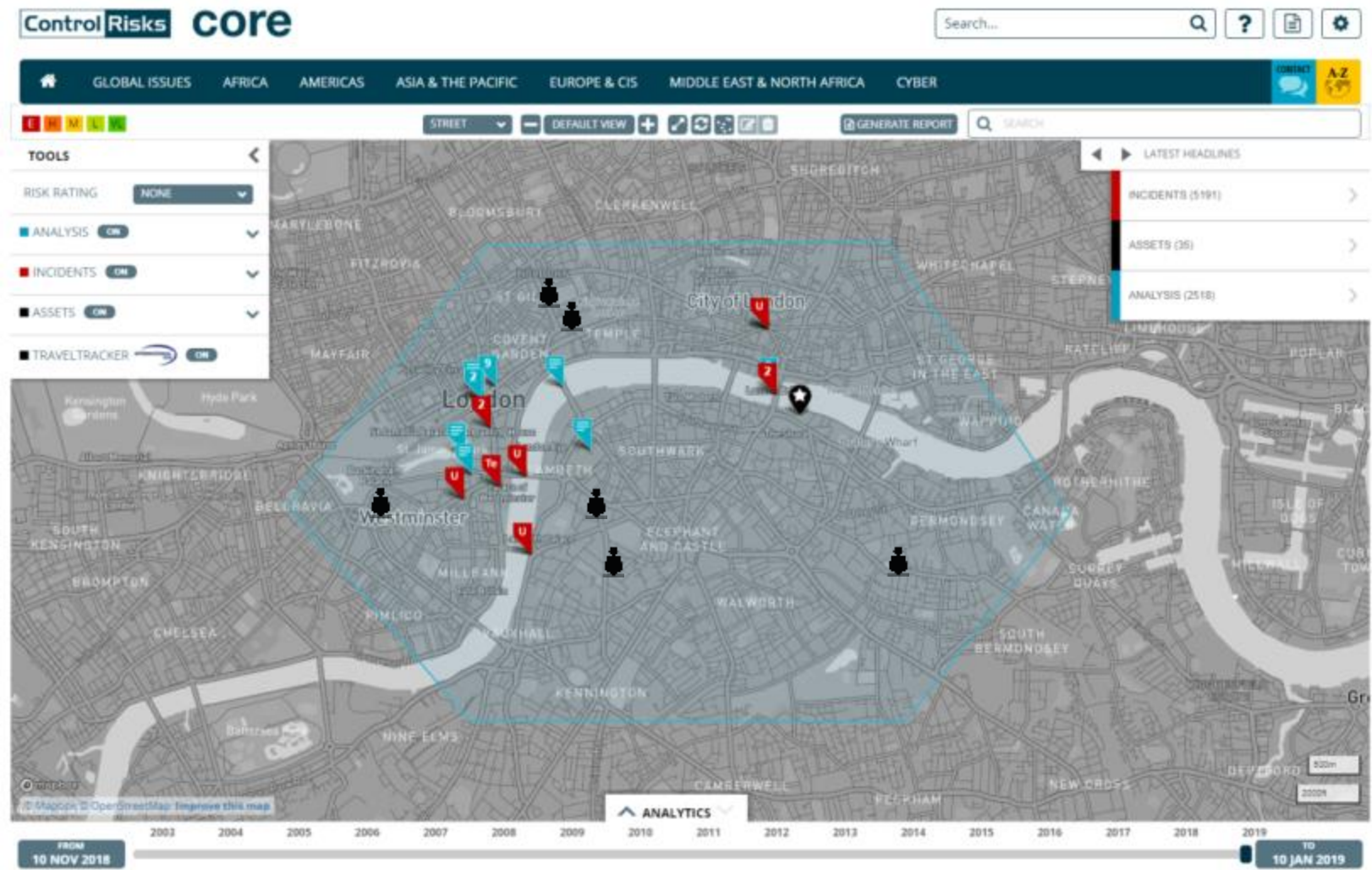
CLEAR ALL

VIEW DETAILS

► Define areas of operational interest to filter, analyse or report on

Reveal **Analysis**, **Incidents**, **Assets**, and information on the map with a click of a button...

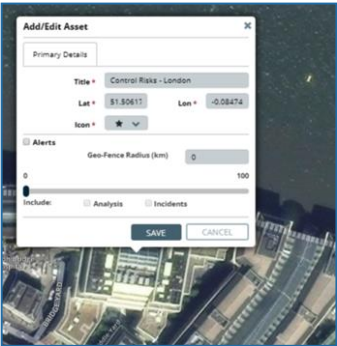
ON OFF



...or set up email alerts for items within your specified areas of interest.

ON Assets with alerts

► Customisable tools

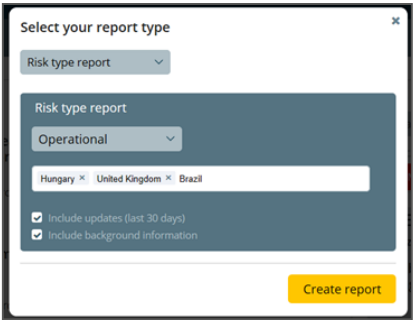
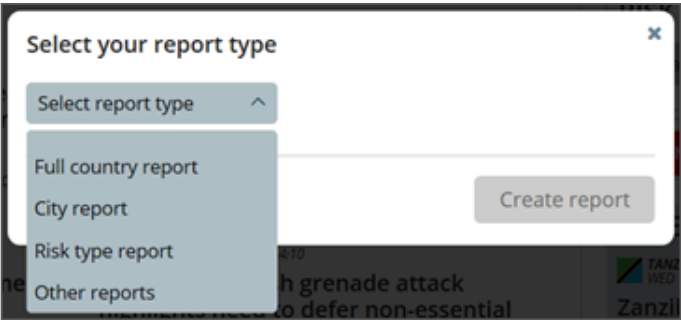


Asset Upload

This feature enables you to view your assets alongside other geospatial information (incident data, analysis, risk rating layers), and also to evaluate your exposure to risks.

- Supports bulk uploads
- Offers customised asset icons
- Delivers adjustable geofence functionality

Upload up to 20,000 of your own ‘points of interest’



Bespoke Reports

Create your own bespoke reports across the CORE platform based on the information you need and your own specific business requirements.

- Print incident reports from the visualisation platform
- Export risk ratings into spread sheets for your own use

Generate reports on any country, content or risk type

- ▶ **Gain insight** into the implications of key events and emerging trends through daily analysis on more than 200 countries and territories.
- ▶ **Evaluate and compare** countries across a range of security, operational and political ratings that can be filtered, visualised, tracked over time and downloaded.
- ▶ **Understand the local threat environment** for your operations by visualising your assets alongside incident data and threat rating overlays. Conduct granular analysis to understand trends in targeting and methods.
- ▶ **Challenge your assumptions** by browsing country profiles, an extensive archive of past analysis and a historic database of security incidents, including our unmatched kidnap database.
- ▶ **Produce tailored reports**, define location-based alerts and receive alerts relevant to your organisation.

core



core+
political

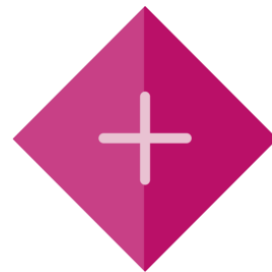
► What is CORE+ Political?

CORE+ Political gives clients the ability to look deeper into the likely evolution of a country through scenario forecasting on an extended time horizon (up to two years). These scenarios help clients to make more informed business decisions by anticipating the trajectory and impact of political and policy developments on the business environment in their jurisdictions and sectors of interest.

It also offers clients additional sub-risk ratings relating to the regulatory environment, specific sections on insurable political risk, and more in-depth political/regulatory background information.



Country scenarios



Additional risk ratings



In-depth research



In depth country scenarios affecting your
business environment

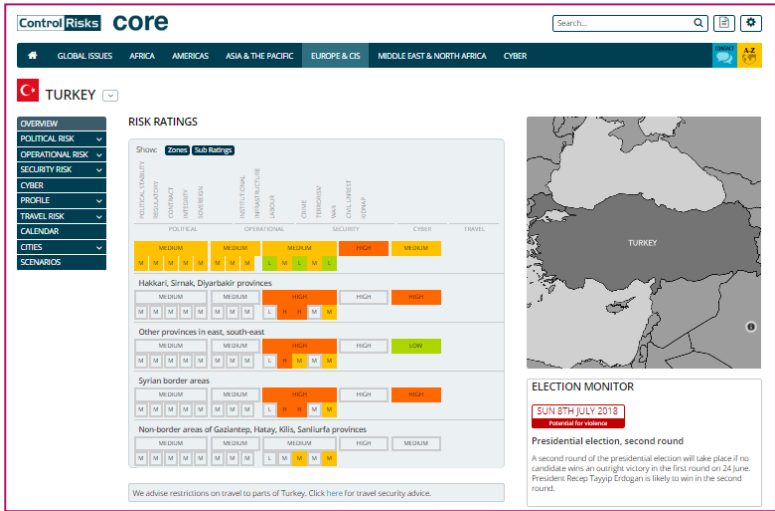
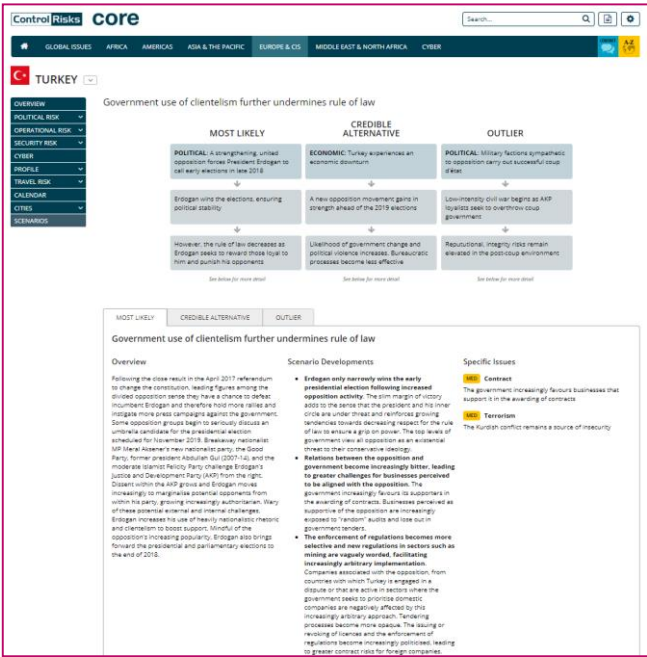
Most Likely

Credible Alternative

Outlier

► Focus on CORE+ Political

- Daily updates, providing an outlook on key political risk issues as well as sectorial implications.
- Country scenarios presenting a two year outlook for 120+ countries including most likely, credible alternative and outlier scenarios.
- In-depth research notes, reflective of relevant political risk topics.
- Political sub-ratings provide further granularity for comparison and benchmarking. These are also available as an overlay on the map. +Political offers the following four new sub-ratings:
 - ◆ Regulatory
 - ◆ Contract
 - ◆ Integrity
 - ◆ Sovereign



Allows you to....

- ▶ **Minimise exposure** to political risk or be better prepared to manage it where it is unavoidable
- ▶ **Look further ahead** into the likely political risk environment of a given country and therefore make better-informed decisions about investments and operations
- ▶ **Plan business objectives** by distinguishing between shorter-term considerations and longer-term trends
- ▶ **Understand requirements for insurance coverage**
- ▶ **Avoid political risk perils** by understanding the regulatory environment

core +
political



```
#select
mirror_ob.select=1
modifier_ob.select=1
bpy.context.scene.objects[0]
print("Selected" + str(modifier_ob))
#mirror_ob.select = 0
print(mirror_ob.selected_objects[0])
#one = bpy.context.selected_objects[0]
#bpy.data.objects[one.name].select = 1
except:
    print("please select exactly two objects")

#----- OPERATOR CLASSES -----
# Mirror Tool
class MirrorX(bpy.types.Operator):
    """This adds an X mirror to the selected object"""
    bl_idname = "object.mirror_mirror_x"
    bl_label = "Mirror X"

    @classmethod
    def poll(cls, context):
        return context.active_object is not None
        mirror_mod = modifier_ob.modifiers[0]

    # set mirror object to mirror_ob
    mirror_mod.mirror_object = mirror_ob

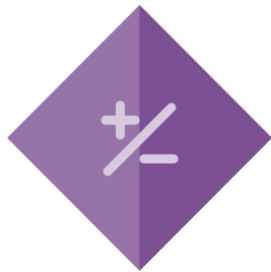
    if operation == "MIRROR X":
        mirror_mod.use_x = True
        mirror_mod.use_y = False
        mirror_mod.use_z = False
    elif operation == "MIRROR Y":
        mirror_mod.use_x = False
        mirror_mod.use_y = True
        mirror_mod.use_z = False
    elif operation == "MIRROR Z":
        mirror_mod.use_x = False
        mirror_mod.use_y = False
        mirror_mod.use_z = True

    #selection at the end -add back the
    mirror_ob.select=1
    modifier_ob.select=1
    bpy.context.scene.objects.active = mirror_ob
    print("Selected" + str(modifier_ob))
    #one = bpy.context.selected_objects[0]
    #bpy.data.objects[one.name].select = 1
except:
    print("please select exactly two objects")
    print("please select exactly two objects")
```

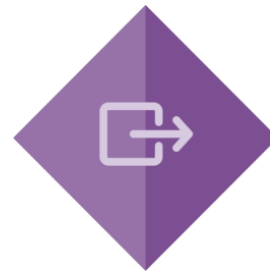
core⁺
cyber

► What is CORE+ Cyber?

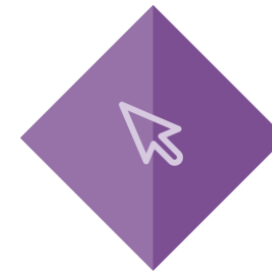
CORE+ Cyber helps you understand current threats and explore emerging trends in the fast-evolving global cyber threat landscape. It provides clear analysis of strategic and tactical developments as they affect individual geographies and sectors, forward-looking assessments of changing threats, and advice on appropriate mitigation techniques. Together, these support your long-term information security planning and allow you to take business decisions with confidence.



Country ratings



Dynamic forecasts



Actionable intelligence

The Control Risks cyber threat intelligence team was one of the first approved threat intelligence suppliers to the Bank of England's CBEST intelligence-led penetration testing scheme for the financial sector.



Your source for actionable intelligence on

Cyber Activism

Cyber Crime

Cyber Espionage

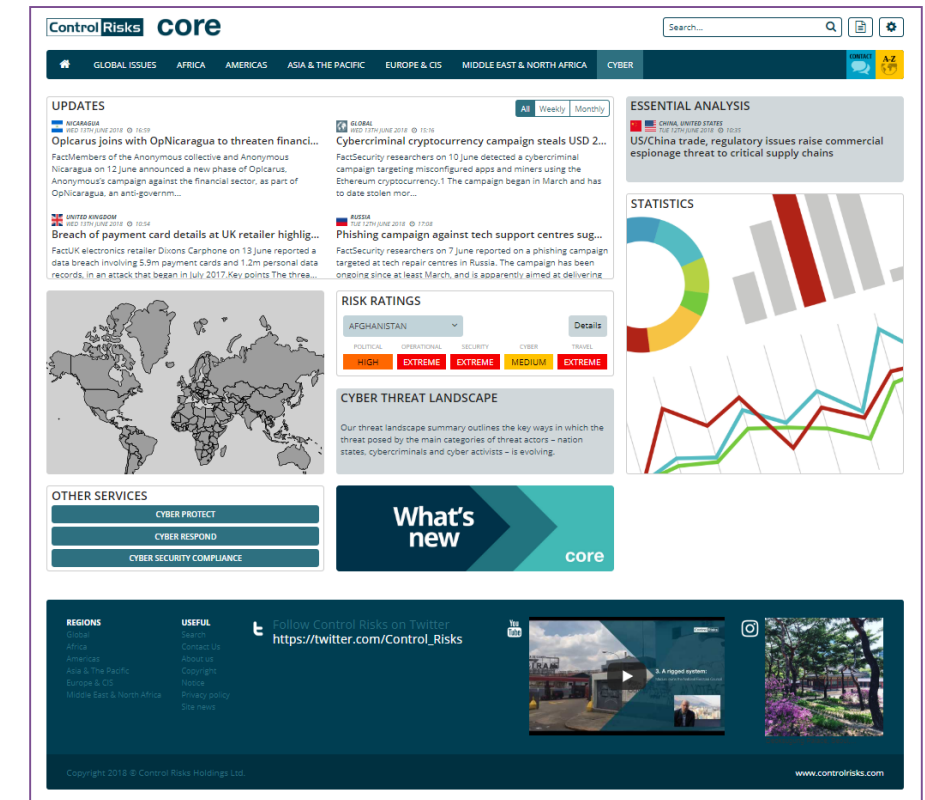
► Focus on CORE+ Cyber

Get an instant overview of a country's cyber threat profile and understand the threat posed by actors operating in high risk jurisdictions, broken down by threat actor categories (nation state, criminal and activist).

Delivering dynamic forecasts ensuring your information security planning is robust and proportionate:

- Providing daily intelligence reports, as well as
- Weekly summaries and monthly, forward-looking intelligence reports. These in-depth thematic coverage scenario based forecasts assess the likely development of intent and capabilities of threat actors.

Compare and evaluate the threat landscape around the world by using our country cyber threat ratings providing a rapid understanding of the current level of cyber threat in a given geography.



Allows you to....

- ▶ **Gain insight into the cyber threat landscape** through a series of reports covering tactical and strategic cyber threat intelligence.
- ▶ **Adjust your cyber defences** and business strategies to minimise your threat and risk profiles by understanding likely future developments in the cyber threat landscape.
- ▶ **Educate and understand** non-expert stakeholders through plain-English and digestible reporting that ensures that the intelligence we provide is easily understandable and can be used to educate.
- ▶ **Anticipate and monitor** for fundamental shifts in the external landscape which are likely to have an effect on your current security posture.

core⁺
cyber



core⁺
top alerts
by  **Dataminr**®

► What is CORE+ Top Alerts by Dataminr?

It detects the earliest indication of high-impact events and critical breaking information on publicly available social media. It delivers real-time notification on security and operational incidents with potentially significant impact, providing early event detection to allow informed business decision making.



Early signals



Asset proximity



Seamlessly integration



Corporate application



Real-time risk monitoring



Control Risks

Dataminr is recognised as one of the world's leading businesses in artificial intelligence and machine learning innovation, pioneering ground-breaking technology for detecting, classifying, and determining the significance of public information in real-time. Control Risks is a specialist global risk consultancy, with 40 years of experience in political, security and integrity risk consulting, working across disciplines, technologies and geographies.

Together, we offer an unmatched solution designed specifically for the corporate market, allowing clients to view and be alerted to incidents of war, terrorism and civil unrest that are of potential significant impact.

Seamlessly integrated into the CORE platform

ControlRiskscore

Search... ? ? ? ?

GLOBAL ISSUESAFRICAMERICASASIA & THE PACIFICEUROPE & CISMIDDLE EAST & NORTH AFRICACONTACTA-Z

UPDATES

SAUDI ARABIA, YEMEN

WED 3RD OCTOBER 2018 12:07

Yemen-based militants will continue to target Saudi ...

Saudi authorities on 30 September foiled an attempt by the rebel Houthi movement to use two remotely controlled, explosive-laden boats to attack Jazan port. The Houthis will continue to target por...

MEXICO

WED 3RD OCTOBER 2018 11:45

Continued rise in number of kidnaps likely in coming...

The National Institute of Statistics and Geography (INEGI) on 25 September published its annual survey, which indicated a 9% increase in the number of kidnap victims in 2017 compared with 2016. We...

BELGIUM

WED 3RD OCTOBER 2018 11:37

Brussels: Expect public transport disruption in comin...

Level: Advisory Location: Brussels - Belgium Category: Rail disruption Members in the capital Brussels on 3 October should expect public transport disruption in the coming hours after De

SUDAN

WED 3RD OCTOBER 2018 10:49

Khartoum: Expect disruption, reconfirm flights after ...

Level: Advisory Location: Khartoum - Sudan Category: Airport disruption Members using the capital's Khartoum International Airport (KRT) on 3 October should expect disruption and reconfirm

RISK RATINGS

AFGHANISTAN

Details

POLITICALOPERATIONALSECURITYTRAVEL

HIGHEXTREMEEXTREMEEXTREME

TOP ALERTS

BY Dataminr

DEIR EZ-ZUR, SYRIA13:00 03 Oct 2018

#Deer Al Zour Aviation International Alliance launches several air raids targeted th...12:57 03 Oct 2018

JAZAN SAUDI ARABIA12:57 03 Oct 2018

March_fast # Jizan: army artillery and committees aimed at gatherings of soldier...12:55 03 Oct 2018

AT TUHAYTA, YEMEN12:55 03 Oct 2018

Military source #Yemeni killed and wounded dozens of invaders and mercenaries ...

FEATURING Dataminr

TRAVEL

REGIONAL SECURITY FORECASTS

STANDING SECURITY ADVICE

EVACUATION MONITOR

CALENDAR

GINKORBRASMS+5

DEUISRCHLSYRBIHJPN

IRLKORCHLGABCMRASMS+6

DEUCOLUSALVASTPCANJPNM

3rd4th5th6th7th8th9th10th

UPCOMING COLLECTIONS

OCTOBER

1st8th15th22nd

LVA MOZ CIV AFG IRL

A snapshot of the most recent Top Alerts, or click through to access a full synopsis from the last 48 hours.

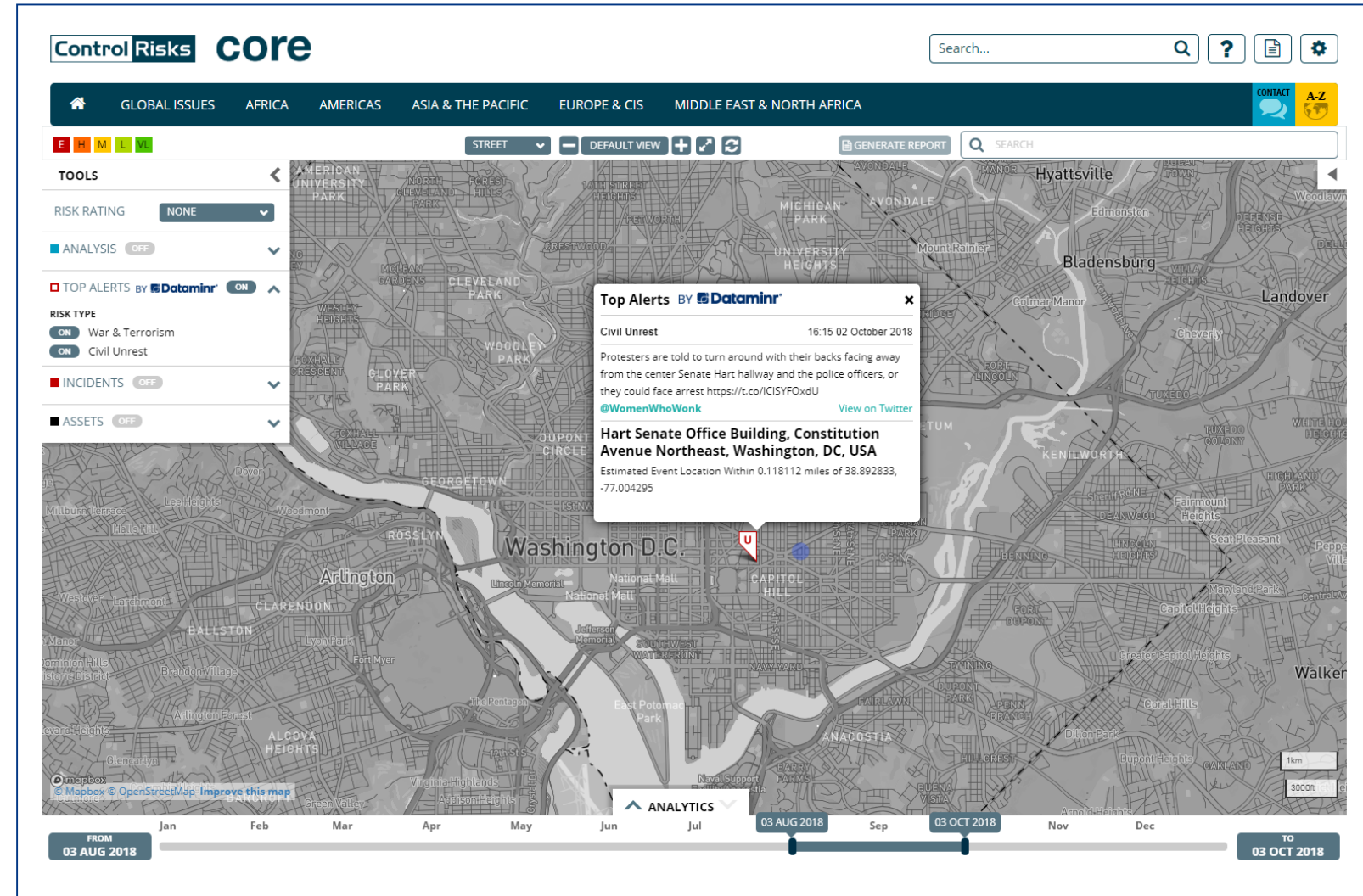
Navigate to Top Alerts via the CORE homepage, and view alongside your assets on the powerful mapping tool.

Edit or delete the footer with the toolbar button 'Update Footer Text'

► Delivers real-time incident notifications in two classifications

- URGENT: events with a potentially high impact
- FLASH: events with a potentially critical impact

150 alerts per day,
displayed for 48 hours



- Provides real-time alerts across two categories



Allows you to....

- ▶ Access information in various convenient ways: **Scan the latest incidents** via the central CORE dashboard, visualise detailed incidents and their locations **plotted on the world map**, or examine an **aggregated list** of all recent alerts.
- ▶ Filter incidents by category to align with your **organisational preferences** or areas of interest.
- ▶ Set up **geo-fenced real-time email notifications** to track incidents occurring within a set radius of a user specified asset location.





core+
analyst access

► What is CORE+ Analyst Access?

CORE+ Analyst Access gives you the opportunity to speak directly with our global team of experts to receive advice that is catered specifically towards your organisation's operations.:



The service starts at
12 hours / year



Can be used at
any time



In increments of
1-1.5 hours

The global team of experts at Control Risks is maintained with one objective in mind: providing the best possible service for our clients.

CORE+ Analyst Access is your direct link to our multinational and multi-disciplined team, drawn from backgrounds including professional services, law, cyber security, technology services, academia, law enforcement, intelligence services and the military.

A hand holding a camera lens against a bright background. The lens is held in a way that its circular opening is prominent. The background is a bright, out-of-focus scene, possibly a city or a landscape, with a strong light source creating a lens flare effect.

core+
analyst access

core

The essential toolkit to monitor risks, evaluate threats and identify opportunities.

core⁺

Specialist modules and services that provide additional coverage of key focus areas.

To arrange a demonstration or free trial, please contact:
simon.mitchell@controlrisks.com